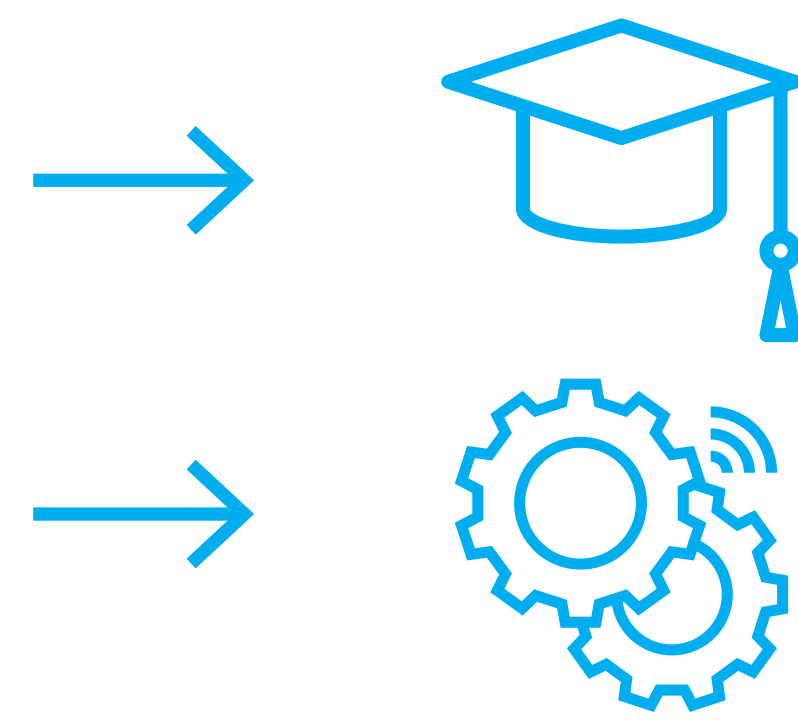


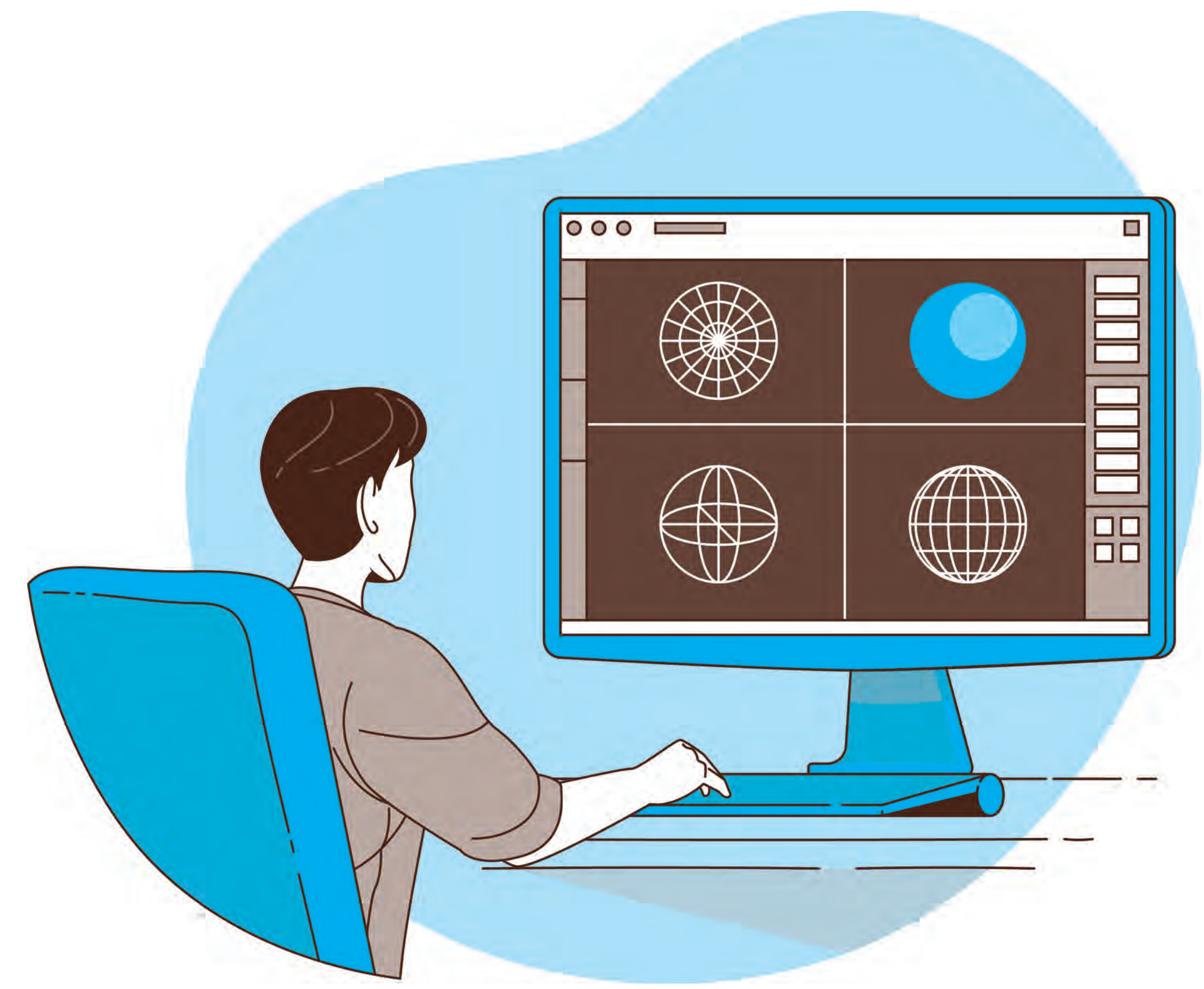
The MSO-ED Hub is an open counter for **modelling, simulation, optimisation and data science technologies** for innovative companies and organisations from all industrial sectors.

Its services are provided by members of the **Spanish Platform of MSO-ED Technologies**:



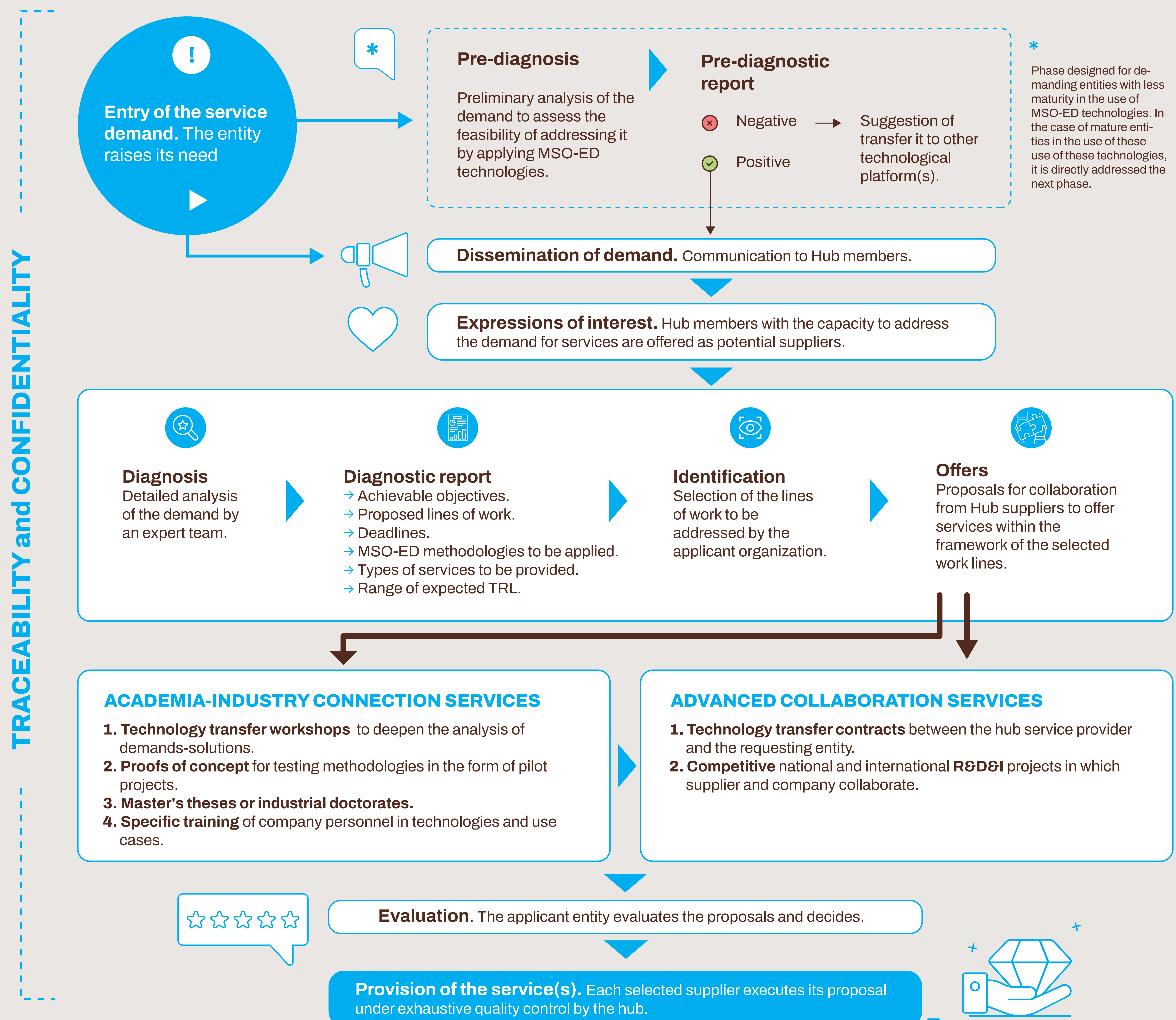
**Entities in the academic world:** universities, research centres and scientific organisations.

**Non-academic entities:** industry, companies, hospitals, technology centres and administrations.



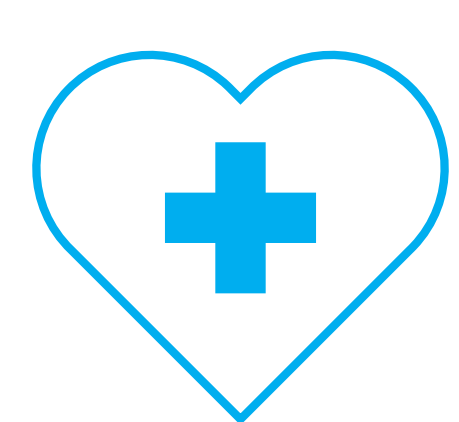
## PROCESSES AND SERVICES

The requesting entities present to the Hub their innovation needs that are susceptible to being solved through MSO-ED technologies. Through a **process of accompaniment led by expert professionals**, the best path towards the solution is sought.



## PRIORITY AREAS OF SERVICE PROVISION

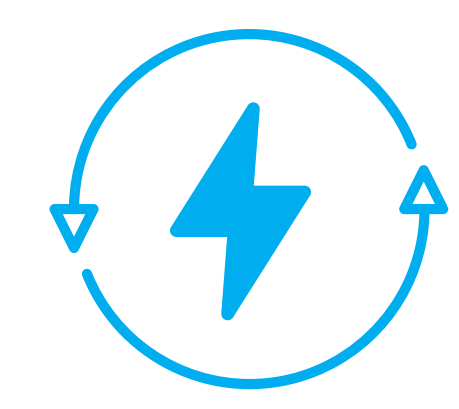
[Challenges 1, 3 and 5 of the State Plan for Scientific and Technical Research and Innovation 2017-2020]



### Health, demographic change and well-being

- Modelling of drug-cell receptor interactions.
- Diagnosis of cancer and infectious diseases.
- Projection of the spread of epidemics.

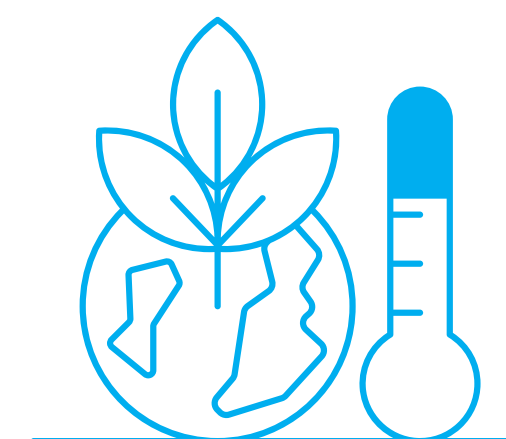
[...]



### Safe, efficient and clean energy

- Analysis of demand response, power transmission and distributed generation.
- Smart grid management.
- Efficiency improvement of power plants, batteries, solar panels, etc.

[...]



### Climate change and use of natural resources and raw materials

- Natural disaster prediction models.
- Simulation of the evolution of global warming.

[...]

More information  
on areas of service  
provision

